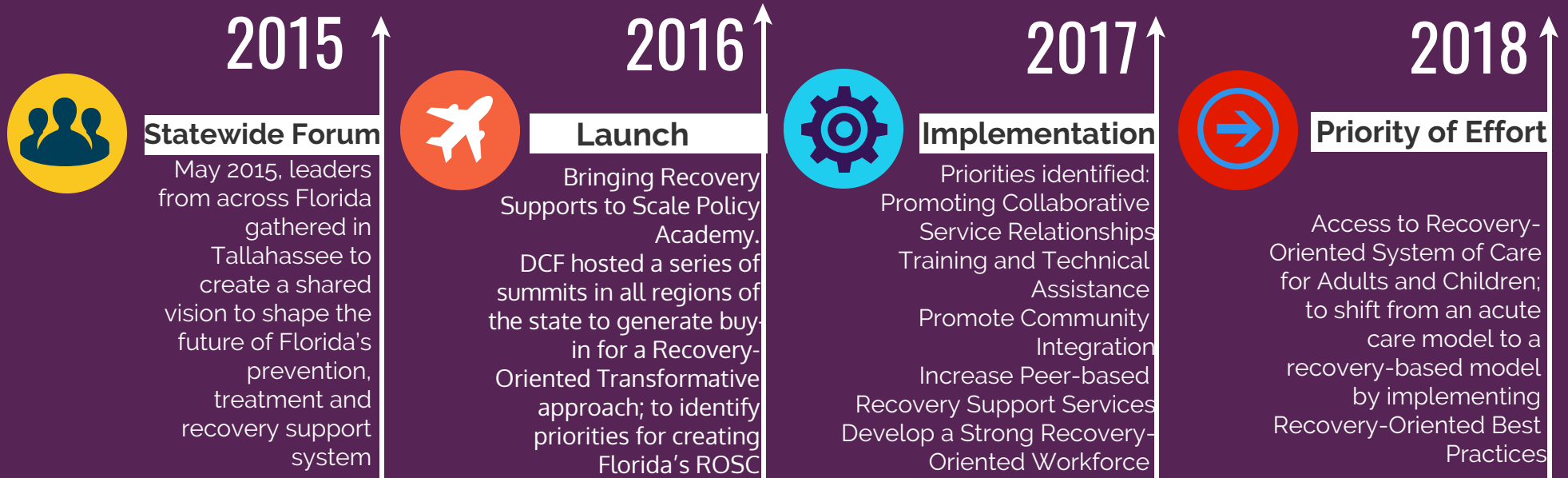


Systemic Transformation

A History of Recovery-Oriented System of Care Process in Florida



Prior to this forum DCF had taken several steps that supported developing a ROSC, including establishing a workforce of peer specialists and supporting them through a position at the state office that was filled by a person with lived behavioral health experiences; to transform its behavioral health system



Groundwork

DCF established a cohort of Change Agents across the state to assist regional stakeholders in achieving outcomes that reflect recovery-oriented values; by building collaborative partnerships with communities and key stakeholders to implement local and statewide priorities



Transformation Assistance

DCF is initiating a statewide Priority of Effort to ensure a sustainable future for systemic transformation, by aligning policies and procedures with a Recovery-Oriented approach; developing standards for an enhanced behavioral health system



Sustainable

