



# **2003 Florida Youth Substance Abuse Survey**

Presentation by  
The Florida Office of Drug  
Control

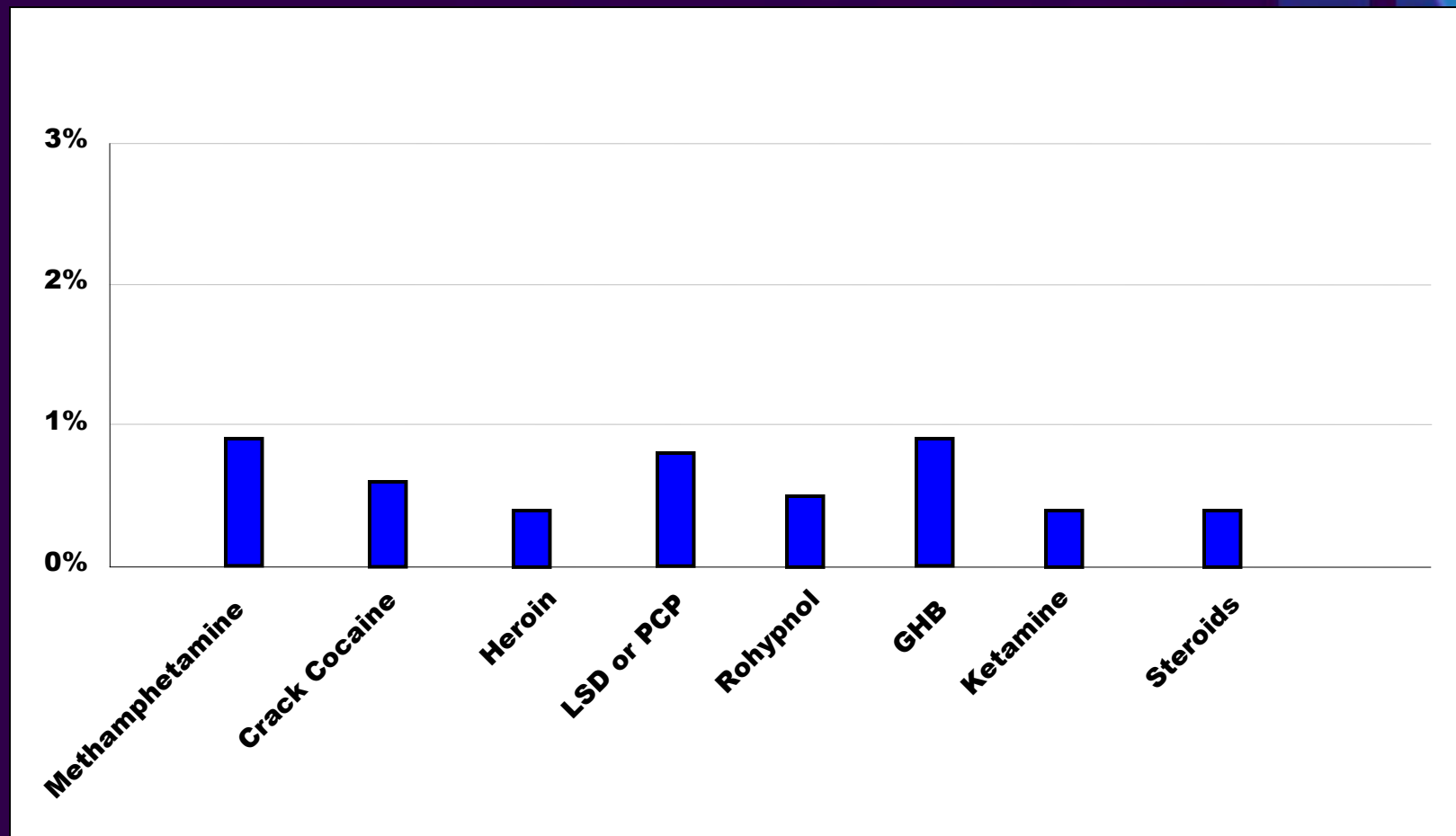
October 16, 2003

# Methodology



- Final sample size was 7,983
- Sampling strategy: schools were selected to represent a wide rural and urban demographic and reflected the proportional diversity of the state's student body to obtain statewide estimates for each grade level
- Students surveyed in 37 out of 67 Florida counties
- Survey administration: May of 2003
- The maximum 95% margin of error is  $\pm 3.7$  percentage points for grade-level estimates

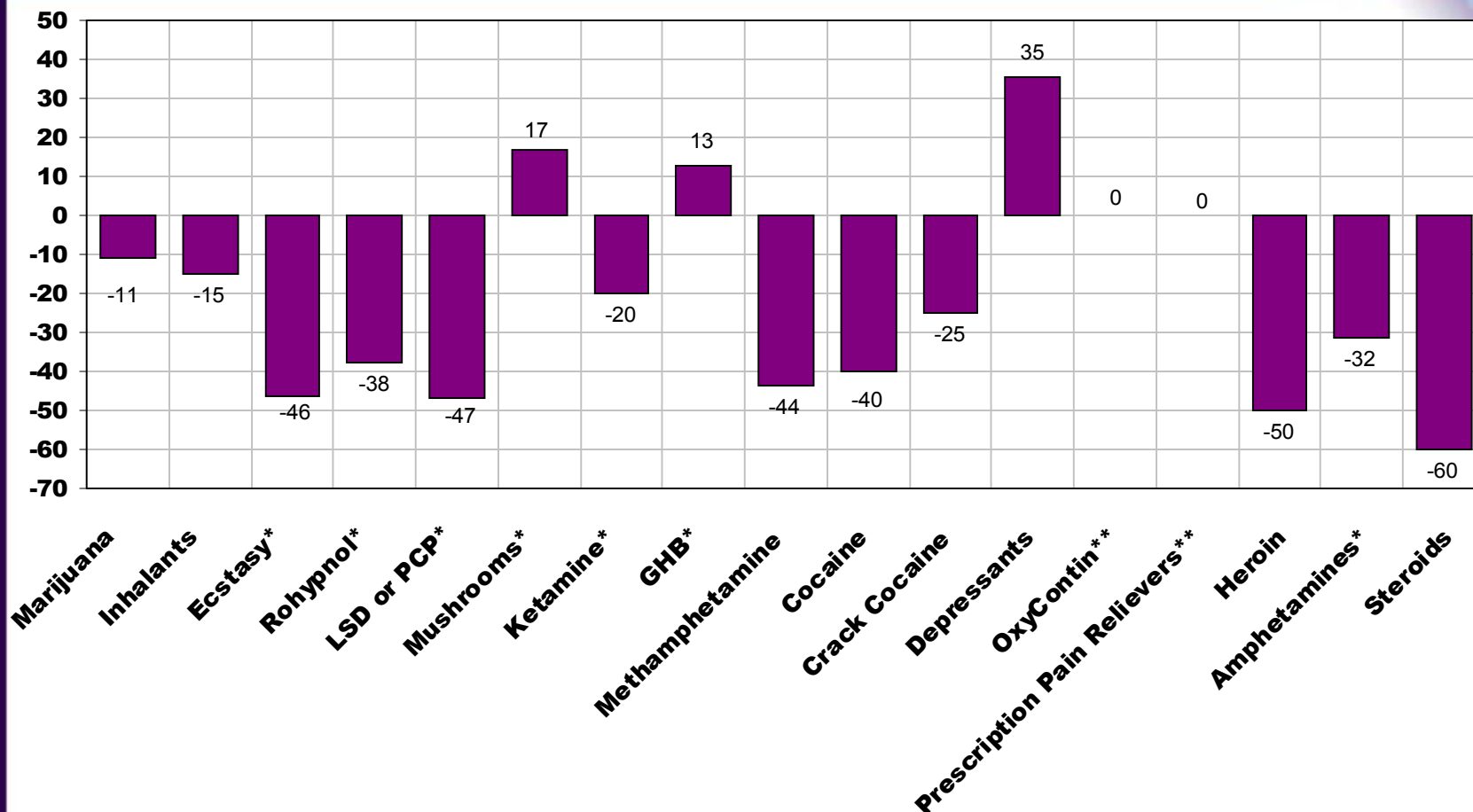
# Drugs with less than 1% use in 2003



# Past Thirty Day Drug Use Trends: 2000-2003



Percent Change



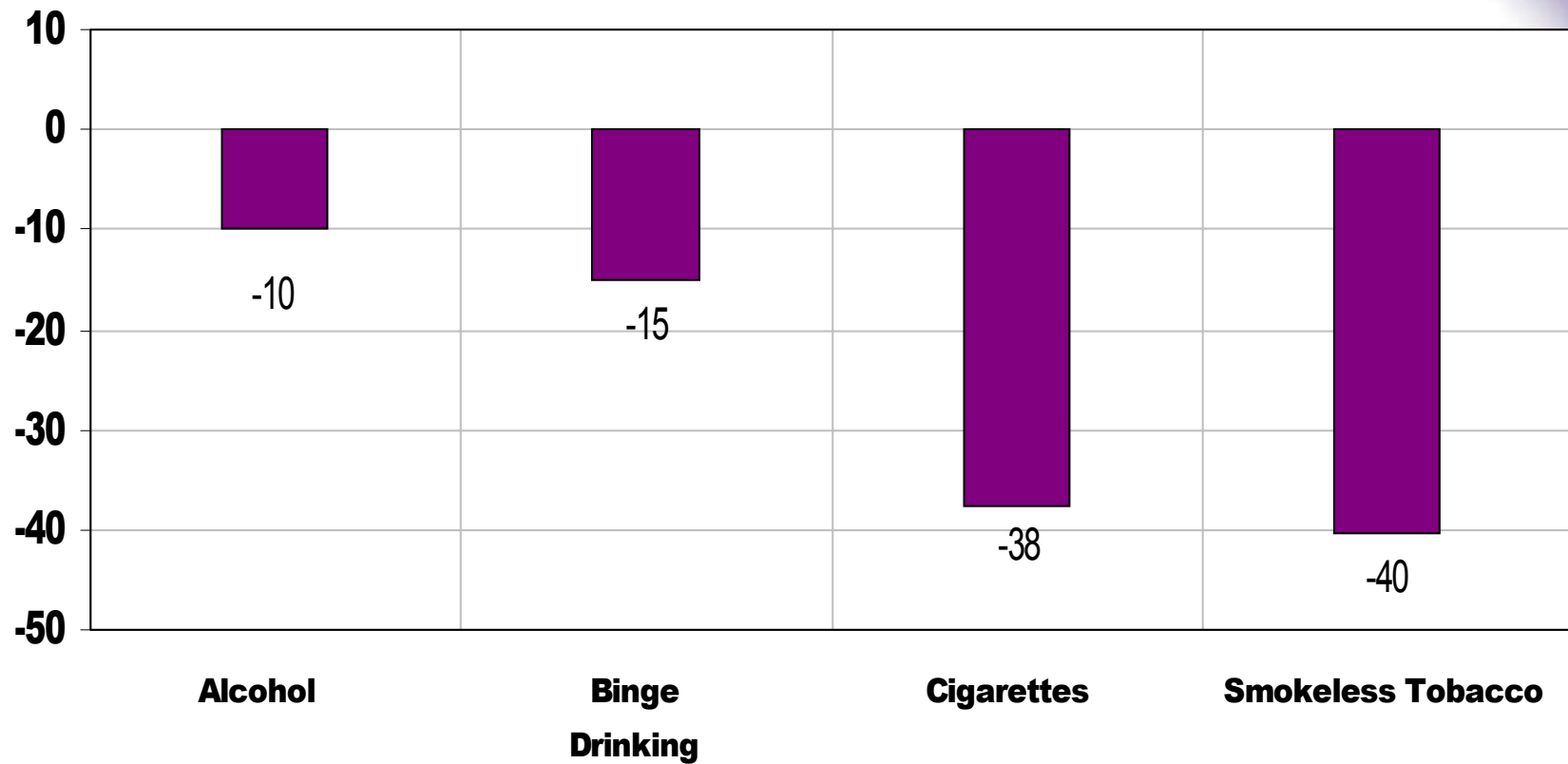
\*2001 Data Used as Comparison Year

\*\*2002 Data Used as Comparison Year

# Past Thirty Day Alcohol and Tobacco Trends: 2000-2003

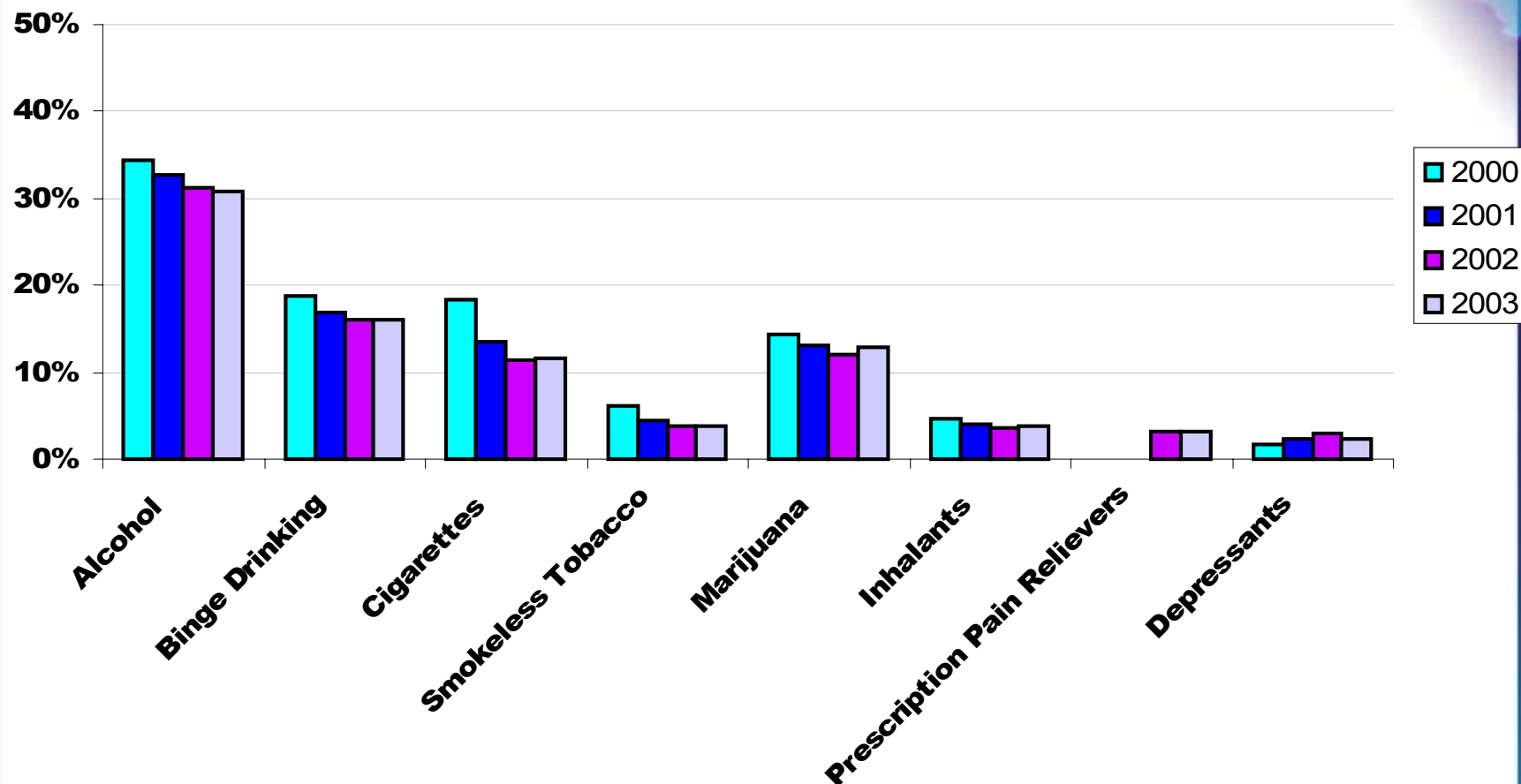


Percent Change



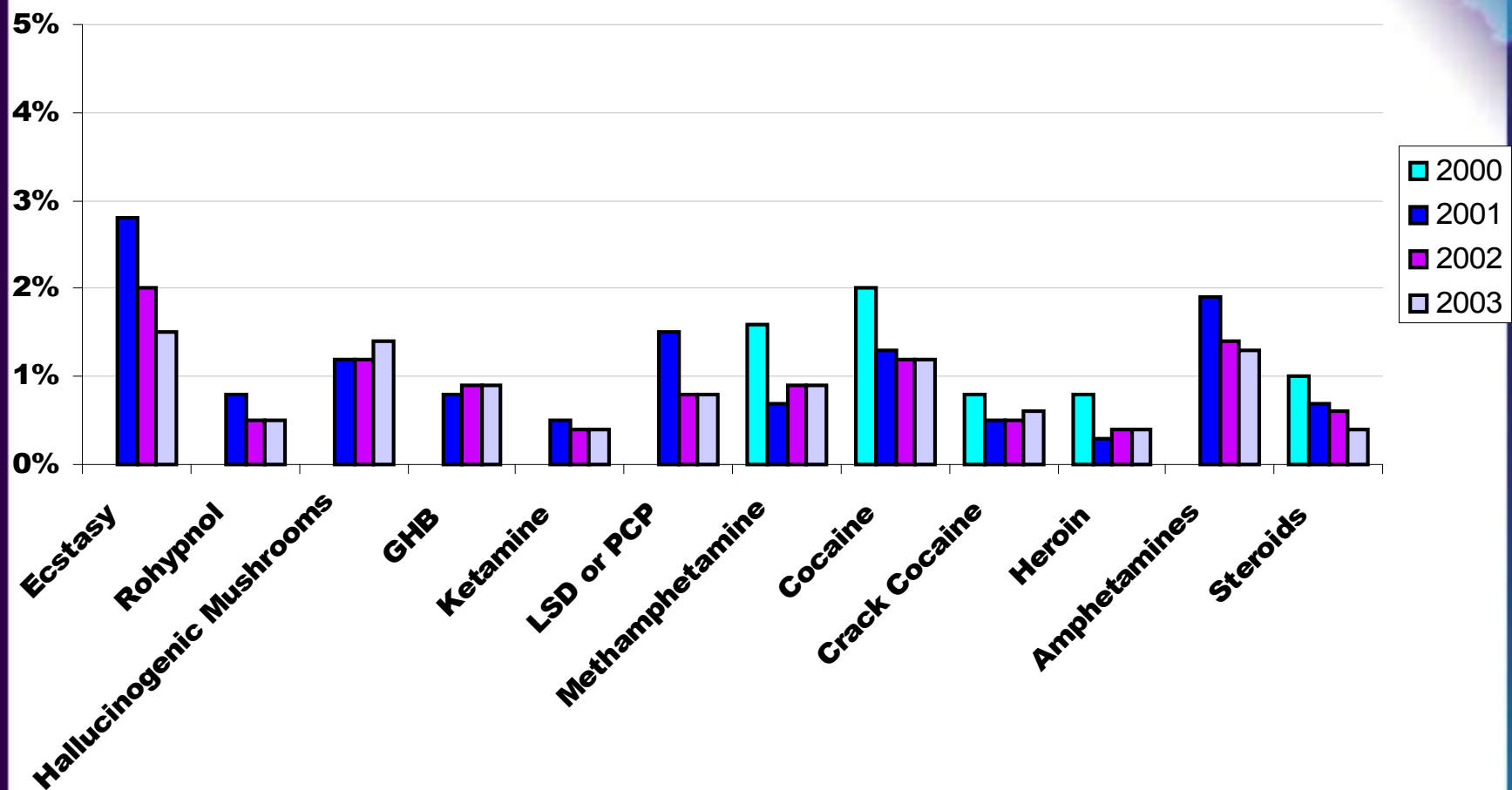
# Trend Summary

Overall, 30-Day Use



# Trend Summary

Overall, 30-Day Use

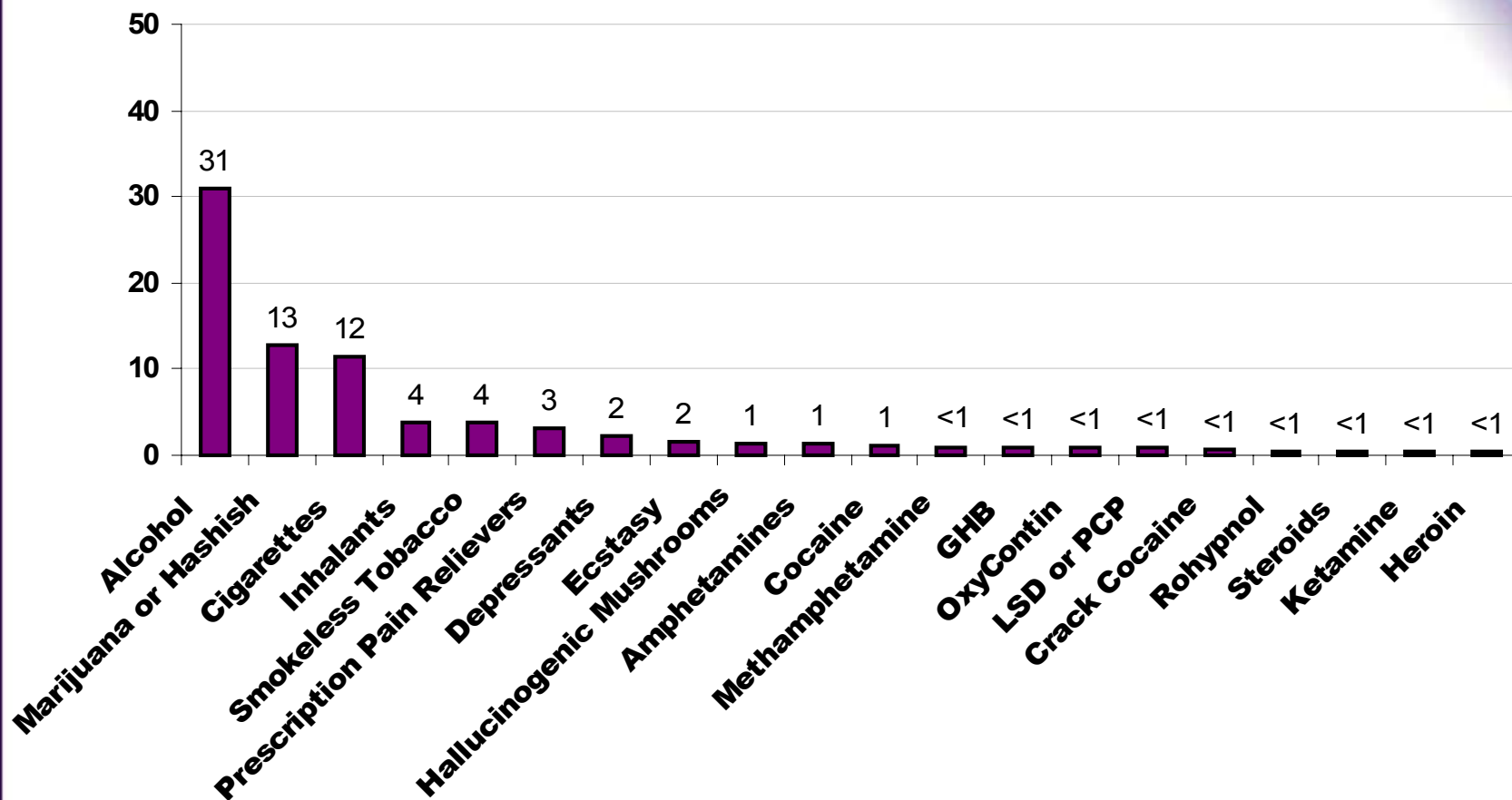


# 30-Day Prevalence

Overall, 2003



Percent





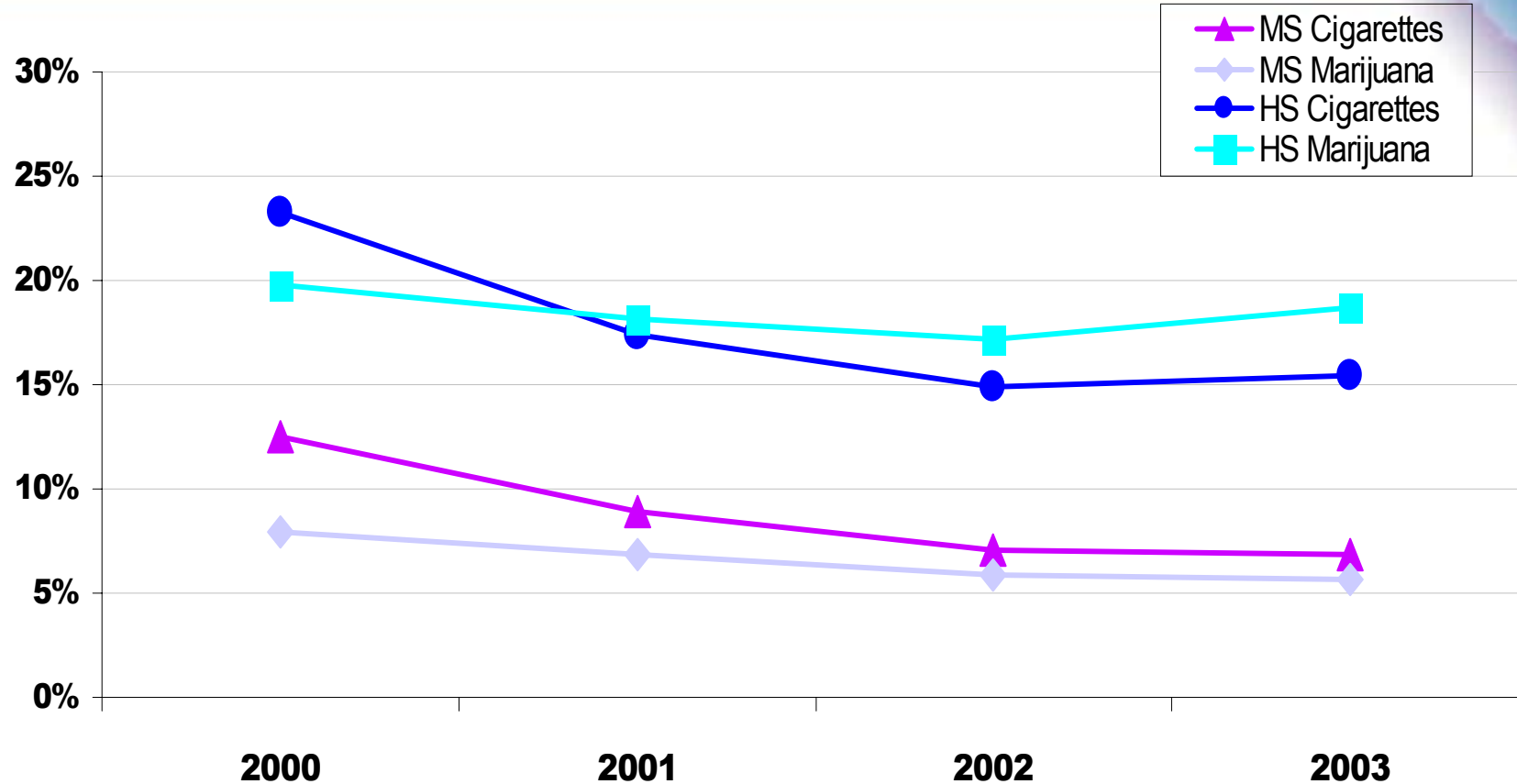
# Cigarettes and Marijuana Overall Decrease (2000-2003)



- Middle School Cigarette Use (2000-2003)  
↓ 46%
- High School Cigarette Use (2000-2003)  
↓ 34%
- Middle School Marijuana Use (2000-2003)  
↓ 30%
- High School Marijuana Use (2000-2003)  
↓ 6%

# Cigarettes versus Marijuana

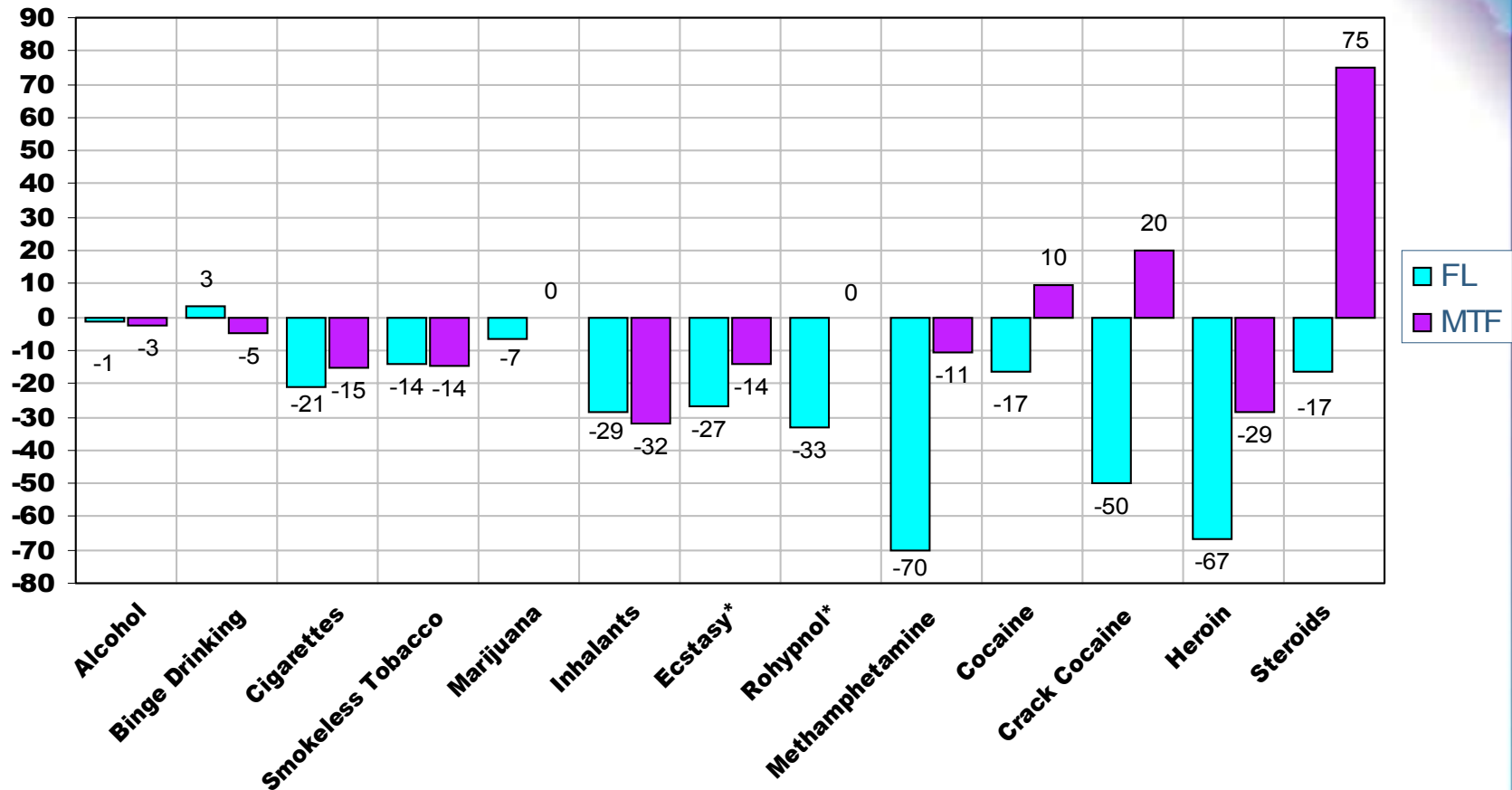
Middle School and High School, 30-Day Use



# Trends

## Florida Youth Survey-Monitoring the Future 12<sup>th</sup> Grade 30-Day ATOD Use, 2000-2002

Percent Change

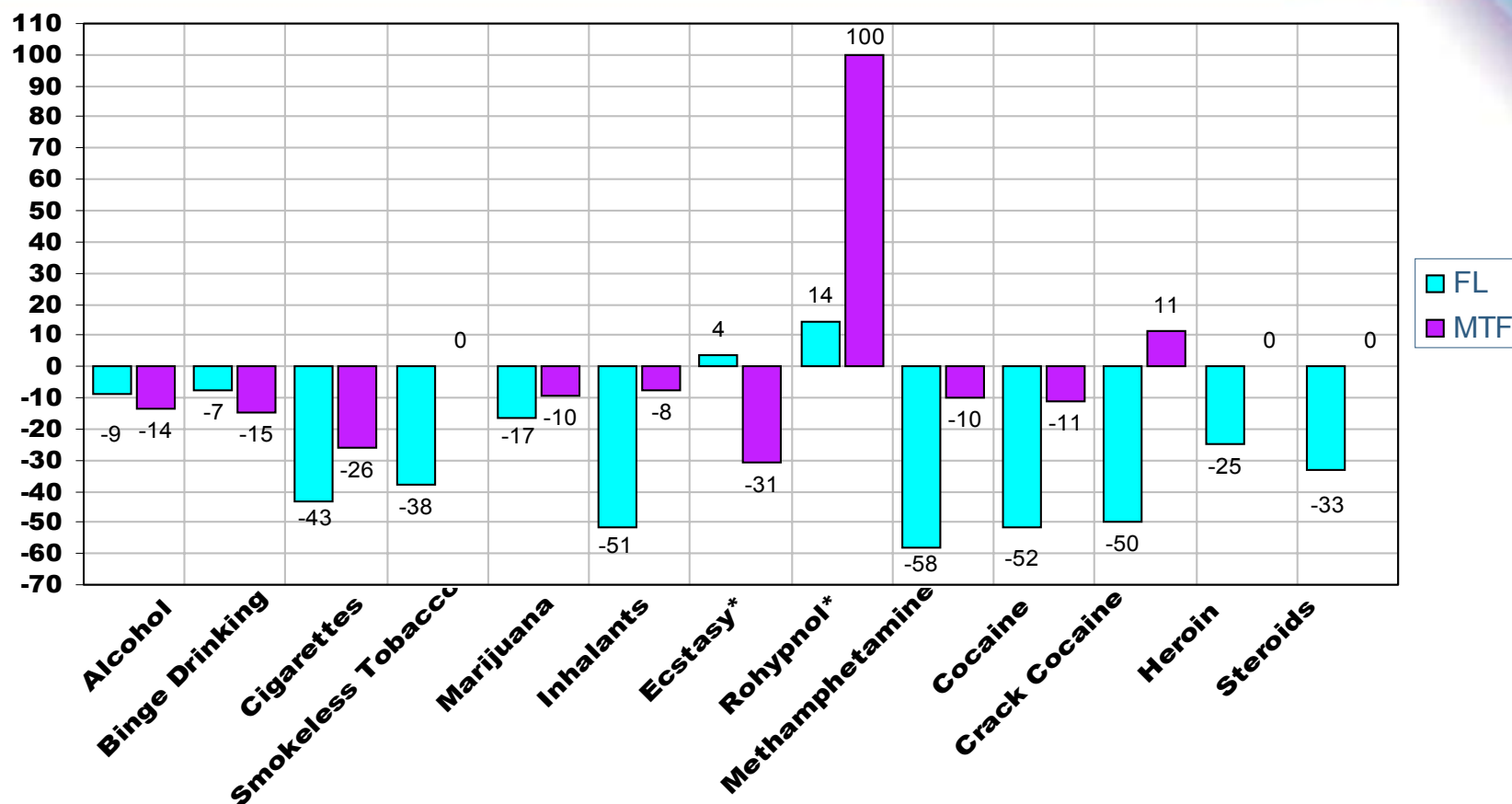


\*2001 Data Used as Comparison Year

# Trends

## Florida Youth Survey-Monitoring the Future 10<sup>th</sup> Grade 30-Day ATOD Use, 2000-2002

Percent Change

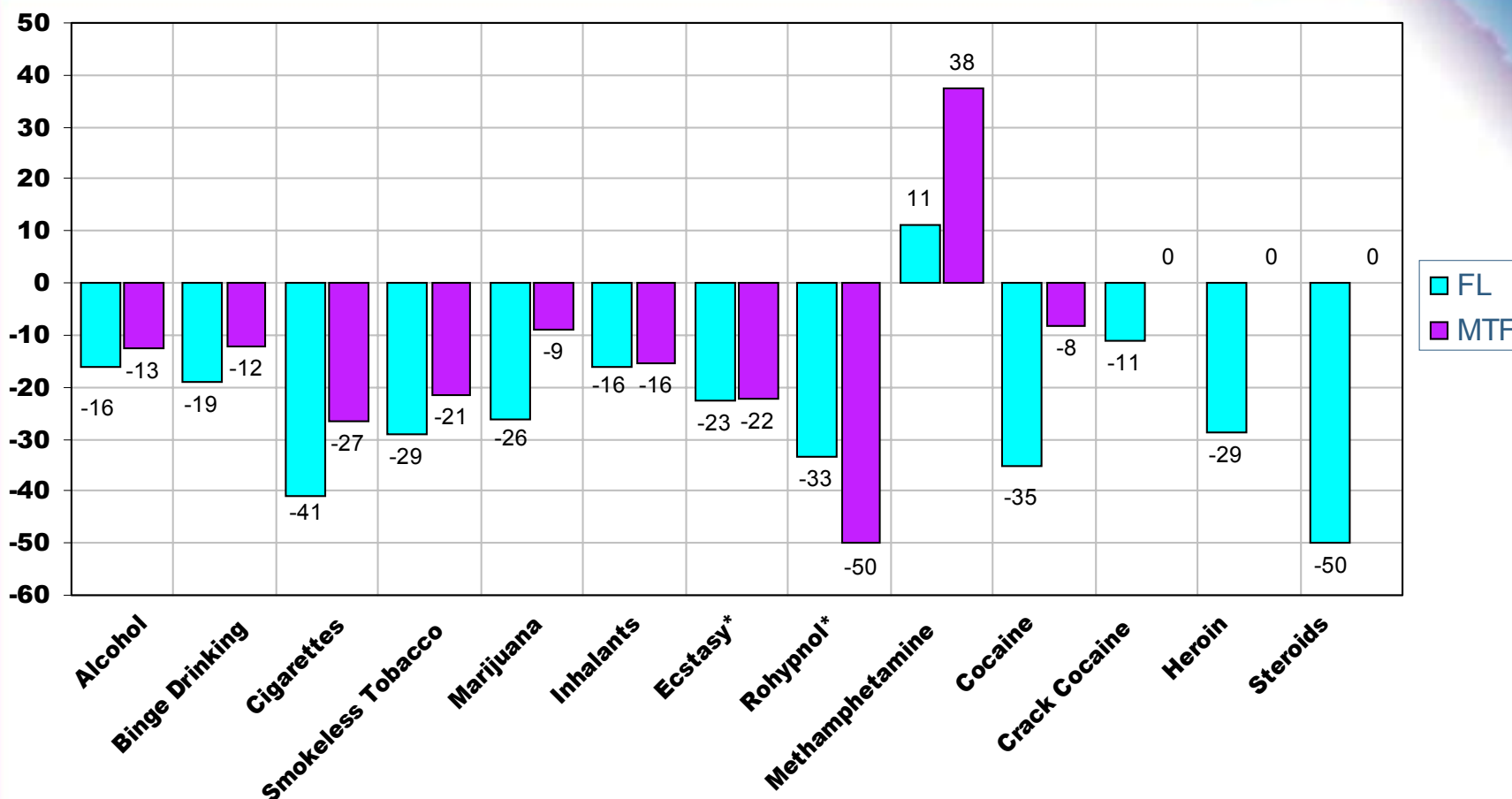


\*2001 Data Used as Comparison Year

# Trends

## Florida Youth Survey- Monitoring the Future 8<sup>th</sup> Grade 30-Day ATOD Use, 2000-2002

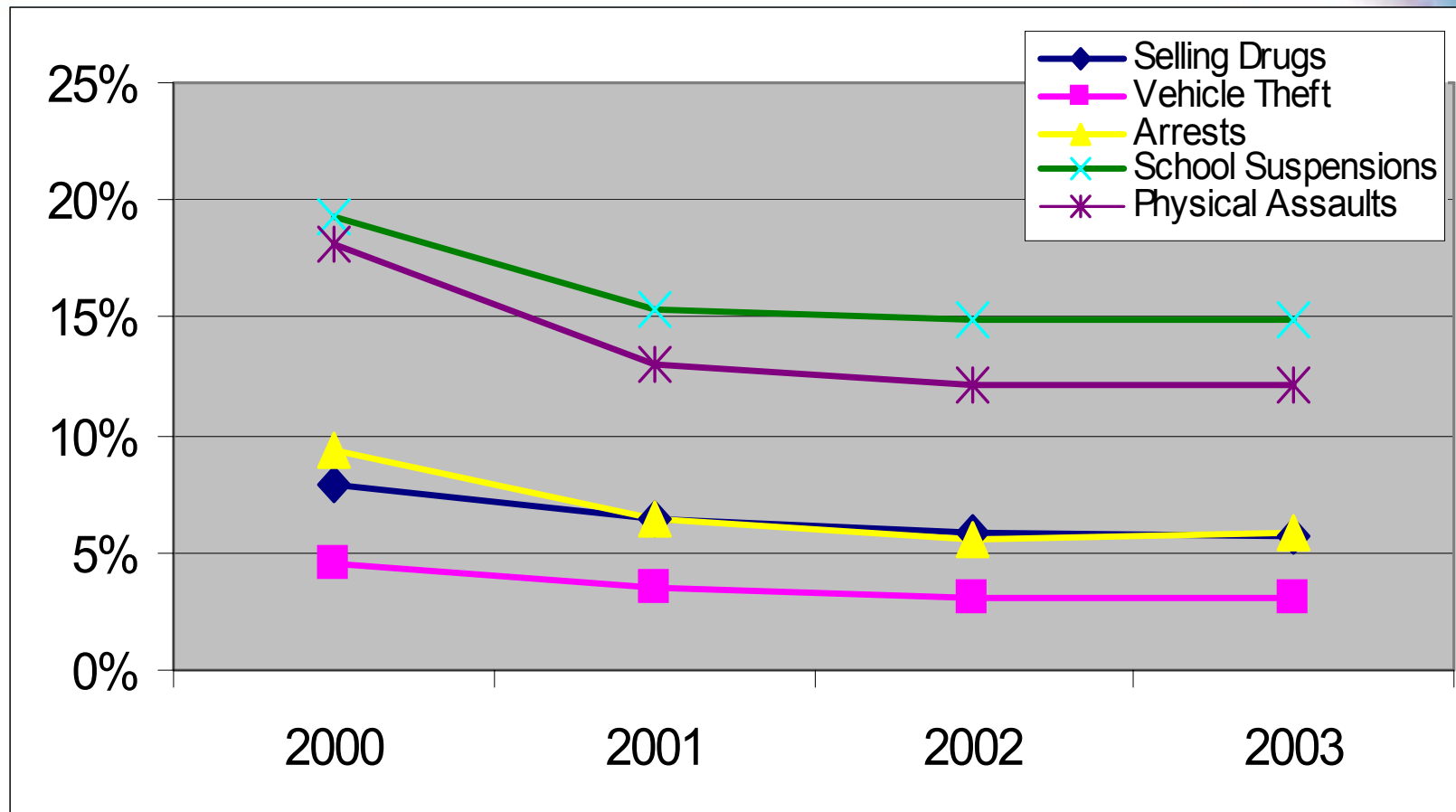
Percent Change



\*2001 Data Used as Comparison Year

# Social Behavior Trends

(2000-2003)



## 30-Day Use Trend Overall Decrease (2000-2003)



	%Current use		%Drop
• Steroids	0.4%	↓	60%
• Heroin	0.4%	↓	50%
• LSD/PCP	0.8%	↓	47%
• Ecstasy	1.5%	↓	46%
• Methamphetamines	0.9%	↓	44%
• Cocaine	1.2%	↓	40%
• Cigarettes	11.5%	↓	38%
• Amphetamines	1.3%	↓	32%
• Crack Cocaine	0.6%	↓	25%
• Marijuana	12.8%	↓	11%
• Alcohol	30.9%	↓	10%



- For more information about the  
2003 Florida Youth Substance  
Abuse Survey  
please go to

[www.myflorida.com/drugcontrol](http://www.myflorida.com/drugcontrol)